

## **Report to Annual Meeting of the Wickham Market Parish Council 19<sup>th</sup> May 2025**

### Proposal to support the George PH for new double yellow lines outside their frontage.

#### Background

On 2 May 2025 a George Committee Member emailed the Vice-Chairman as follows:

“On behalf of the George Community Pub and in the interest of safety for pedestrians, pushchair and wheelchair users we request that double yellow lines are introduced as a matter of priority outside the George and as far down the High Street as George Lane. We would suggest that this could be a continuation of the double yellow lines currently proposed where the High Street narrows for priority access.

The single yellow line that is currently in place is giving us a problem in that after 6pm cars are parked across the line onto the pavement which if left will impede access to the most vulnerable of our society. I attach photographs of what is happening daily and there is no reason to believe this will stop when the pub opens in late May.

The Pub has undergone a major restoration and we are very proud that this will be the first Pub in Suffolk to offer full accessibility. If wheelchair users are not able to be dropped off outside the pub because of overnight parked vehicles it will deny them the chance to enjoy the available facilities.

We are also concerned that if parking continues along this part of the High Street, it will impact the line of sight of traffic going onto the Hill and function of the proposed traffic priority system for oncoming vehicles.

If you felt that an onsite meeting to discuss the issue would be beneficial then we would be happy to meet you there.”



### Responses

Suffolk County Councillor Nicholl replied on 2 May 2025 to say:

“Dear David,

I strongly support the request made by The George Committee.

Even without the imminent opening of the pub and the resulting increase of pedestrian, including those using wheelchairs and walking aids, activity in this part of the High Street the current casual parking on the pavement in this area should be deterred. It impedes pedestrians' movement, reduces their safety if they have to walk on the carriageway and can produce difficult sight lines for motorists.

The carefully thought through approach by the PC and others to the SZC funded traffic calming in the High Street will be undermined if, notwithstanding the pub, steps are not taken as part of those plans to reduce dangerous pavement parking near a bottleneck on the High Street and resulting in

immediate danger to pedestrians seeking to use the pavement. As I have noted such pedestrian activity is likely to greatly increase once The George reopens.

I am copying this to Steve Merry [SCC] and Rebecca Quigg [SZC] as I would strongly support steps to be taken now to include, within the emerging Wickham Market High Street plans, better control of casual pavement parking at the upper end of the High Street for the reasons I have outlined and in support of the email you have received from Susan Hering.

Best wishes,

Alexander

Alexander Nicoll  
Member for Wickham Division  
Deputy Cabinet member for Transport Strategy  
Suffolk County Council"

He then added:

"It would make the best sense and probably be as quick or quicker to fold this matter into the wider SZC/WMPC High Street proposals and I am grateful to Steve Merry for just responding to my earlier email and indicating that the High Street design [by SZC] will be considered in the light of this additional information."

### Options

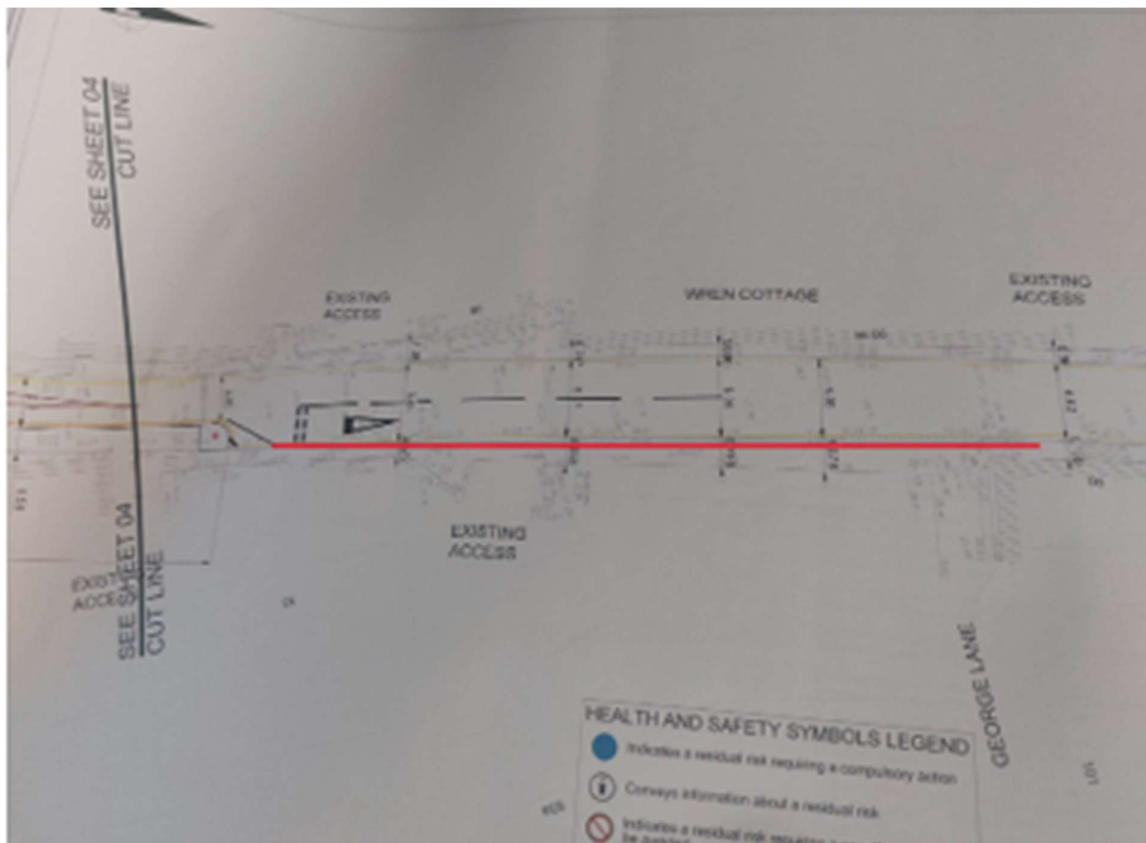
The existing waiting restriction outside the George is a single yellow line that restricts parking Monday to Saturday between 8am and 6pm. A double yellow line would prevent parking at all times but permit loading and unloading.

The Vice-Chairman advised the George on 2<sup>nd</sup> May 2025 that waiting restrictions usually take some while and some cost to legally process. There are 2 routes to achieve this. Either wait for SZC's traffic calming works, perhaps later this year, or approach Highways now for them to assess your request and commence the "standard" process, which could take up to 12 months and cost in the order of £10k for the George to fund. Sometimes Highways will put out temporary No Waiting cones backed up by a Temporary or Experimental Traffic

Regulation Order but it would be for them to agree the justification. Either way, the advice on the SCC web site is that in the first instance you seek the support of your parish council.”

### Proposal

**That Wickham Market Parish Council supports the request by the George PH for the conversion of the existing single yellow line to a double yellow line over the length shown in red below and to work with SZC to incorporate this change within the package of new waiting restrictions that they would fund, as part of their proposed traffic calming scheme.**



DC  
12 May 2025